



**REQUEST FOR BIDS (RFB)**

**2020-2022 Chemical Application Services**

**PLATTE RIVER RECOVERY IMPLEMENTATION PROGRAM**

Office of the Executive Director  
4111 4<sup>th</sup> Avenue, Suite 6  
Kearney, Nebraska 68845

**November 20, 2019**



## Contents

I.	OVERVIEW .....	3
II.	WORK DESCRIPTION & SCOPE OF WORK.....	3
III.	CHEMICAL APPLICATION TIMING AND PERFORMANCE .....	4
IV.	PROGRAM LANDS .....	6
V.	BID ITEMS.....	8
VI.	FIELD AND OFFICE EQUIPMENT.....	8
VII.	CONTRACT TERMS.....	8
VIII.	SUBMISSION REQUIREMENTS .....	9
IX.	BID RESPONSE FORMS .....	11

**Appendix A** – Nebraska Noxious Weed List

**Appendix B** – Nebraska Invasive Weed Watch List

**Appendix C** –Chemical Management Form

**Appendix D** – Figures



## PLATTE RIVER RECOVERY IMPLEMENTATION PROGRAM REQUEST FOR BIDS (RFB)

**SUBJECT:** 2020-2022 Chemical Application Services  
**REQUEST DATE:** February ??, 2020  
**PRE-BID MEETING:** March ?, 2020 – 1:00 pm CST  
**CLOSING DATE:** March ?, 2020 – 5:00 pm CST  
**POINT OF CONTACT:** Tim R. Tunnell, Senior Land Manager  
 Headwaters Corporation  
[tunnellt@headwaterscorp.com](mailto:tunnellt@headwaterscorp.com)

### I. OVERVIEW

The Platte River Recovery Implementation Program (“Program” or “PRRIP”) was initiated on January 1, 2007 between Nebraska, Wyoming, Colorado, and the Department of the Interior to address threatened and endangered species issues in the central and lower Platte River basin. The species considered in the Program, referred to as “target species”, are the whooping crane, piping plover, interior least tern, and pallid sturgeon.

A Governance Committee (GC) reviews, directs, and provides oversight for Program activities. The GC is comprised of one representative from each of the three states, three water user representatives, two representatives from environmental groups, and two members representing federal agencies. The GC has named Mr. Jason Farnsworth to serve as the Program Executive Director (ED). Headwaters Corporation staff are located in Nebraska and Colorado and are responsible for assisting in carrying out Program-related activities.

One of the major components of Program implementation is acquisition and management of 10,000 acres of habitat for the benefit of the target species. To date, approximately 13,225 acres have been acquired and are being managed by the Program’s Executive Director’s Office (EDO) Staff. The purpose of this request is to obtain qualified and licensed contractors to provide Chemical Application Services efficiently, effectively and in a timely manner to treat noxious and invasive weeds in Program owned and/or managed grasslands and maintain bare ground at off-channel sand and water nesting areas (OCSW) for target species. **As such, the GC is requesting bids for a three- year contract from qualified contractors for 2020-2022 chemical application services to be performed starting April 1 and ending on or around November 15 of each year.**

### II. WORK DESCRIPTION & SCOPE OF WORK

#### Work Description

The Program is requesting bids from experienced contractors for chemical application services in 2020, 2021 and 2022. All applicators must be certified with the Nebraska Department of Agriculture as a Commercial Applicator, categories needed are: General, Ag. Plant and Aquatic. The performance period will begin on April 1 and will end on or around November 15. Bare ground treatments on OCSW sites will require two applications; one application in spring- typically April 1-April 15 prior to nest initiation of target species and a follow-up application in late summer after all chicks have fledged- typically August 15-September 1. Control of noxious weeds in Program owned and/or managed grassland sites will typically require 3-4 trips, as needed, through sites during the year. Generally, trips will be in the early spring, early summer, late summer, and fall prior to first frost.



### Scope of Work

The Contractor must have sufficient availability to fully utilize weather windows for chemical applications at Program lands which are distributed along a 90-mile reach of the Platte River in central Nebraska. The Contractor will be responsible for all labor, materials, equipment, tools, transportation and supplies required to complete the work. All applicators must be certified with the Nebraska Department of Agriculture as a Commercial Applicator, categories needed are: General, Ag. Plant and Aquatic.

Bare ground treatments on OCSW sites will require one application in late spring- typically April 1-April 15 prior to nest initiation of target species and a follow-up application in late summer after all chicks have fledged- typically August 15-September 1. Areas will require broadcast spraying to ensure full spray coverage to the water's edge with both spring and fall applications. Equipment and spraying operations shall minimize rutting and ground surface disturbance. *Close communication between Program staff and contractors must occur in order to avoid conflicts with spraying and target species. It is the responsibility of the Contractor to coordinate with Program staff on the status of use of target species prior to mobilization to the site for spraying.*

Noxious weed control will typically require 3-4 trips, as needed, through grassland sites during the year. Generally, trips will be in the early spring, early summer, late summer, and fall prior to first frost. A list of state of Nebraska noxious weed and Watch list species can be found in Appendix A and B.

### III. CHEMICAL APPLICATION TIMING AND PERFORMANCE

Contractor will be ready to begin work as soon as contract is signed. Contractor will proceed to complete all the work as quickly and efficiently as possible while maintaining the quality standards listed in the Scope of Work. The Program Land Manager may stop work and order the removal and/or replacement of any equipment if the equipment is not working or calibrated properly. Contractor then has 48 hours to replace the equipment with an acceptable substitute and remove the inadequate equipment. The Program Land Manager may prohibit chemical application during adverse weather conditions (heat, cold, dry, wet, etc.). If adverse weather is a problem, Contractor must furnish additional personnel and equipment to make up for lost time and ensure timely completion.

Contractor must guarantee a minimum of 100% coverage of the bare ground treatment areas and at least 95% mortality of targeted vegetation within the areas. Acceptable coverage will be determined within five days of application using several random spot inspections. Contractors are required to use marking dye to help with this process. Signs of mortality will be documented at random spot inspection sites beginning three weeks following application. If coverage and/or mortality rates are not met, the Program may require Contractor to retreat the areas at Contractor's expense and at no additional cost to the Program. No chemical herbicide applications will exceed the label rates on the herbicide containers. All requirements, including state and/or local requirements, listed on the herbicide label are to be followed. Failure to comply with label instructions is a violation of federal and/or state laws. Contractor is liable for any penalty, fines, or damages resulting from misuse of herbicides. Unless otherwise specified, Contractor will supply and apply all chemical herbicides, adjuvants, and other materials to ensure an effective kill of the target vegetation and will be reimbursed for the chemical used.

Contractor is expected to minimize broadcast spraying and use spot-spraying as primary control method of noxious and invasive weeds. However, broadcast spraying is allowable when infestations are larger than 0.25 acre. Contractor is expected to prevent overspray, drift, and/or nontarget damage to surrounding vegetation, open water, structures, and/or facilities. No less than 100% of all target vegetation must be



96 treated, and no less than 95% of the treated vegetation must be killed for the control method to be considered  
97 acceptable by the Program.

98  
99 The Program is implementing a “Come Clean, Leave Clean” standard. All equipment used on Program  
100 lands, including tractors, ATVs, UTVs, trucks, trailers, and/or Argos need to be free of any plant material.  
101 The Program Land Manager will delineate a designated cleaning area on each tract for contractors to clean  
102 their equipment.

103  
104 A Nebraska Department of Agriculture licensed supervisor shall be designated by Contractor as the field  
105 supervisor and remain onsite during all chemical application projects. The licensed supervisor is responsible  
106 to ensure the following:

- 107  
108 • Chemical pesticides must be kept in original containers until mixing. All mixtures should  
109 have temporary labels that list the trade name and rates of chemicals and any adjuvants  
110 within the spray container.
- 111 • The licensed supervisor must readily have available during application copies of all  
112 chemical pesticides labels and Material Safety Data Sheets (MSDS) that are being  
113 applied.
- 114 • During mixing and application, all recommended Personal Protective Equipment (PPE)  
115 will be properly worn to minimize applicator exposure to chemicals. All measuring cups  
116 should be rinsed and the effluent poured into the tank/bottle mixture.
- 117 • Chemicals and any rinse material from chemical containers will be applied to specific  
118 areas; run-off of any chemical substance is not acceptable.
- 119 • Herbicides that are mixed, transferred, or temporarily stored while on Program lands will  
120 be done so at designated staging areas. Any and all containers that contain pesticide or  
121 pesticide residues will be removed from Program lands once the chemical application is  
122 complete.
- 123 • Herbicides will not be applied during adverse or non-optimal weather conditions for the  
124 application method. Any weather condition, including heat, wind, or precipitation, that  
125 minimizes the effectiveness of the herbicide or increases the exposure and/or potential  
126 for drift to non-target vegetation, personnel, or objects will not be tolerated.
- 127 • Emphasis must be placed on ensuring the application will minimize exposure to people,  
128 facilities and the surrounding environment. Avoid any non-target exposure.

129  
130 The supervisor must be able to correctly identify the targeted species. A representative from Program staff  
131 will meet with the licensed supervisor at the beginning of each project to discuss treatment area and  
132 prescriptions and any special restrictions. Contractor is required to provide Program staff with the following  
133 upon request by the Program Land Manager:

- 134  
135 • List of chemical herbicide trade names and the rates used to produce all chemical  
136 mixtures applied. This list should also include any adjuvants or surfactants included in  
137 the mixture.
- 138 • A “PRRIP Chemical Management Form” (Appendix C) is required after  
139 completion of treatment on each individual infestation, local area, or workday depending  
140 on time spent at a particular area.
- 141 • A map depicting estimated spray coverage area and GPS data of coverage area for the invoice.



#### IV. PROGRAM LANDS

Program lands are generally organized into approximately 1,000 to 3,000 acre blocks referred to as habitat complexes. There are eight habitat complexes distributed across the project area, containing the majority of land (**Appendix D; Figure 1**). Additionally, there are 2 non-complex wetland sites that have been associated with a complex. There are also two OCSW sites located within habitat complexes and three stand-alone OCSW sites. For the purposes of this contracting process, the OCSW sites have been split in to east and west groupings.

The following sections of the scope of work provide specific information about each habitat complex:

##### Plum Creek Complex

Contractors should be aware of the following points:

1. Plum Creek Complex is located less than 1 mile to the south of Interstate 80 between the towns of Lexington and Overton, NE.
2. Plum Creek complex is approximately 722 acres, contains 2 tracts of land and is 2 miles long with the majority of the land located on the south side of the Platte River. There is 1 additional wetland tract, approximately 100 acres, located in close proximity to the southwest of the complex (**Figure 2**).
3. There is a 21 acre OCSW site located in the middle of Tract 2009003.

##### Cottonwood Ranch Complex

Contractors should be aware of the following points:

1. Cottonwood Ranch Complex is located less than 1 mile to the south of Interstate 80 between the towns of Overton and Elm Creek, NE.
2. Cottonwood Ranch complex is approximately 3,528 acres with an additional 530 acres of water project property, contains 7 tracts of land and is 5 miles long with the majority of the land located on the south side of the main channel of the Platte River. There is 1 additional wetland tract, approximately 153 acres, located in close proximity to the northwest of the complex (**Figure 3**).
3. There is a 16 acre OCSW site and a 5 acre island with the main channel located in the middle of Tract 2008002.

##### Elm Creek Complex

Contractors should be aware of the following points:

1. Elm Creek Complex is located less than 1/4 mile to the south of Interstate 80 between the towns of Elm Creek and Odessa, NE.
2. Elm Creek complex is approximately 1,124 acres, contains 5 tracts of land and is 2 miles long with 3 tracts being located on the north side of the Platte river and the others are located on the south side of the Platte River (**Figure 4**).

Pawnee Complex

Contractors should be aware of the following points:

1. The Pawnee Complex is located less than 1/4 mile to the south of Interstate 80 between the towns of Odessa and Kearney, NE.
2. The Pawnee complex is approximately 682 acres, contains 4 tracts of land and is 3 miles long. Two tracts are located on the south side of the Platte River and one is on the north side (**Figure 5**).
3. There is a 17 acre OCSW site located at Tract 2010002.

Fort Kearny Complex

Contractors should be aware of the following points:

1. The Fort Kearny Complex is located less than 1/4 mile to the south of Interstate 80 and is located between 2 channels of the Platte River near the town of Kearney, NE and Highway 10.
2. The Fort Kearny complex is approximately 2,353 acres, contains 7 tracts of land and is 7 miles long (**Figure 6**).
3. There is a 28 acre of OCSW site located at Tract 2009008.

Clark Island Complex

Contractors should be aware of the following points:

1. The Clark Island Complex is located less than 1/4 mile to the south of Interstate 80 and is located near the towns of Gibbon, NE and Shelton, NE.
2. The Clark Island complex is approximately 771 acres, contains 1 tract of land and is 2 miles long (**Figure 7**).

Shoemaker Island Complex

Contractors should be aware of the following points:

1. Shoemaker Island Complex is located less than 1/2 mile to the south of Interstate 80 between 2 channels of the Platte River near the towns of Wood River and Alda, NE.
2. Shoemaker Island complex is approximately 1,249 acres, contains 3 tracts of land and is 7 miles long (**Figure 8**).
3. There is a 16 acre OCSW site located in the middle of East Tract 2011001 and a 6 acre OCSW site located on Tract 2011002.

Chapman Complex

Contractors should be aware of the following points:

1. Chapman Complex is located 3 miles south of Highway 30 within the main channel of the Platte River near the towns of Chapman and Phillips, NE.



2. Chapman Complex is approximately 568 acres, contains 2 tracts of land and is 2.7 miles long (**Figure 9**).

OCSW Bare Ground West

1. OCSW Bare Ground West tracts are located to the south of Interstate 80 between the towns of Lexington and Kearney, NE.

2. OCSW Bare Ground West contains 3 sites and is approximately 54 acres, approximately 14 acres of overbank spraying along channel, and the remaining areas are buildings and parking areas on various tracts (**Figure 10**).

OCSW Bare Ground East

1. OCSW Bare Ground East tracts are located to the south of Interstate 80 between Highway 10- I-80 interchange and the town of Alda, NE.

2. OCSW Bare Ground East contains 3 tracts of land is approximately 46 acres, 1 inchannel island approximately 9 acres, and the remaining areas are buildings and parking areas on various tracts (**Figure 11**).

NOTE: DETAILED MAPS AVAILABLE UPON REQUEST AFTER AWARDING OF CONTRACT.

**V. BID ITEMS**

Contractors will submit annual mobilization and demobilization costs, per-hour rate for labor and equipment, and chemical cost mark up as a percentage. Contractor compensation will be based on the mobilization and demobilization cost, number of hours of labor and equipment use, and the quantity of herbicides used to complete the work.

**VI. FIELD AND OFFICE EQUIPMENT**

Potential Contractors will own or acquire all field and office equipment and software required to provide chemical application services.

**VII. CONTRACT TERMS**

The selected Contractor (s) will be retained by: Nebraska Community Foundation  
PO Box 83107  
Lincoln, NE 68501

The Contractor will be subject to (but not limited to) the following contract terms:

Certification/Training Requirements: Meet or exceed Nebraska Department of Agriculture herbicide spraying certification and training requirements.

Insurance Requirements: If awarded, Contractor shall represent and guarantee that all employees, agents, servants or representatives of Contractor, and all employees, agents, servants, or representatives of sub consultants are covered by workers' compensation insurance as required by Nebraska Statute. Prior to entering into contract with PRRIP, contractor shall furnish PRRIP with certificates of insurance, naming PRRIP as named or additional insured without waiving any defense of sovereign immunity or increasing





the limits of PRRIP's liability in excess of Nebraska State Statute for item (3) below, providing evidence that contractor has in full force and effect the following minimum insurance with insurers authorized to do business in the State of Nebraska. The certificate of insurance shall also provide that PRRIP shall be notified in writing by the carrier at least 30 days prior to any cancellation of said insurance.

1. Workers' compensation insurance as required above;
2. Motor vehicular liability insurance with limits of not less than \$1,000,000 combined single limit which insurance shall be applicable to any and all vehicles utilized by contractor to provide the services requested by PRRIP;
3. General liability insurance for all services rendered by contractor for the requested services with a minimum of \$1,000,000 personal and advertising injury and \$1,000,000 general aggregate.

### VIII. SUBMISSION REQUIREMENTS

All interested parties having experience providing the services listed in this RFB are requested to submit a bid.

#### Instructions for Submitting Bids

One original bid document supporting documentation must be submitted by mail or email to Tim Tunnell no later than 5:00 PM Central Time **Friday, March ?, 2020**. A bid is late if received after that time and will not be considered. Proposals should be submitted to:

Tim R. Tunnell, Senior Land Manager  
Platte River Recovery Implementation Program  
4111 4<sup>th</sup> Avenue, Suite 6  
Kearney, NE 68845

[tunnellt@headwaterscorp.com](mailto:tunnellt@headwaterscorp.com)

Questions regarding the information contained in this RFB should be submitted by **email only** (no phone calls) to Tim Tunnell at [tunnellt@headwaterscorp.com](mailto:tunnellt@headwaterscorp.com). A list of compiled Contractor questions and responses will be maintained on the Program web site ([www.PlatteRiverProgram.org](http://www.PlatteRiverProgram.org)) in the same location as this RFB solicitation.

#### RFB Schedule

The ED Office expects to complete the selection process and award the work by approximately **March ?, 2020**. The following table represents the RFB schedule:

Description	Date	Time (Central)
Issue RFB	February ?, 2020	NA
Mandatory Pre-proposal meeting	March ?, 2020	1:00 PM
Last day for respondents to submit questions regarding the RFB	March ?, 2020	12:00 PM
Bids due from respondents	March ?, 2020	5:00 PM
Evaluation of bids	March ?, 2020 - March ?, 2020	
Award of Work	On or around March ?, 2020	
Start of Work	Approximately April ?, 2020	
Completion of Work	Approximately November ?, 2020	



### Pre-Bid Meeting

A **mandatory** pre-bid meeting of interested parties will be held on **March ?, 2020** from 1:00 to 2:00 p.m. Central Time via conference call or in person at the PRRIP Conference room for the purpose of familiarizing the respondents with the work scope and requirements included herein before submitting a response to this RFB. The PRRIP conference room is located in the Eagle Nest Plaza at 4111 4<sup>th</sup> Avenue, Suite 6 in Kearney, NE 68845. Please email Tim Tunnell ([tunnellt@headwaterscorp.com](mailto:tunnellt@headwaterscorp.com)) for the conference call dial-in information and provide a list of people from your party expected to join in the pre-proposal meeting by 12:00 p.m. central time on **February ?, 2020**.

It is the Contractor's responsibility, while at the pre-proposal meeting/conference call, to ask questions necessary to understand the RFB so the respondent can submit a proposal that is complete and in accordance with RFB requirements. There shall be no minutes distributed by the ED Office regarding the meeting.

### Bid Content

Bids must include the following contents and documentation:

#### **1) General Information**

**2) Completed Bid Form** charge for annual mobilization, rate per hour of chemical application (rate includes equipment charge & labor), and percentage of mark up for herbicide used.

**3) Equipment list** that includes all equipment that would be mobilized for this project.

**4) References Names/address/telephone** of three clients who can attest to your experience as it relates to the services you are proposing.

**5) Description of insurance** shall be provided with the proposal. Proof of insurance will be required before a contract is issued. Minimum insurance requirements are described in Section VII.

**6) Affirmative statement** that neither the firm nor the principals of the firm are on the federal suspended and disbarred list. If the firm has a DUNS number, please provide to assist in verification.

### Criteria for Evaluating Bids

Bids will be evaluated and a Contractor selected based on the following principal considerations:

1. Price proposal.

2. Equipment availability.

3. References.

4. Insurance and affirmative statement.

The winning bid will be selected to best meet overall project objectives. Should the successful Contractor(s) be unable at any time to accomplish the work they have been contracted for or meet any of the requirements or standards listed in this Bid, the next ranked Contractor may be contacted to provide the required work.

### Award Notice

After completing the evaluation of all bids, the Program will select a Contractor. If the Program is unable to negotiate a mutually satisfactory contract with a Contractor, it may, at its sole discretion, cancel and reissue a new RFB.

### Program Perspective

The Program GC has the sole discretion and reserves the right to reject any and all bids received in response to this RFB and to cancel this solicitation if it is deemed in the best interest of the Program to do so. Issuance of this RFB in no way constitutes a commitment by the Program to award a contract, or to pay Contractor's costs incurred either in the preparation of a response to his RFB or during negotiations, if any, of a contract



for services. The Program also reserves the right to make amendments to this RFB by giving written notice to Contractors, and to request clarification, supplements, and additions to the information provided by a Contractor.

By submitting a bid in response to this solicitation, Contractors understand and agree that any selection of a Contractor or any decision to reject any or all responses or to establish no contracts shall be at the sole discretion of the Program. To the extent authorized by law, the Contractor shall indemnify, save, and hold harmless the Nebraska Community Foundation, the states of Colorado, Wyoming, and Nebraska, the Department of the Interior, members of the GC, and the ED Office, their employees, employers, and agents, against any and all claims, damages, liability, and court awards including costs, expenses, and attorney fees incurred as a result of any act or omission by the Contractor or its employees, agents, sub-Contractors, or assignees pursuant to the terms of this project. Additionally, by submitting a proposal, Contractor agrees that they waive any claim for the recovery of any costs or expenses incurred in preparing and submitting a proposal.

#### **IX. BID RESPONSE FORMS**

The following forms are to be submitted as part of Contractor proposals.



391 **PART I: GENERAL INFORMATION**

Company Name:	Telephone Number:	Fax Number:
Mailing Address:	City, State, Zip Code:	
Physical Address:	City, State, Zip Code:	
Name of Contact:	Telephone Number:	E-mail Address & Company web address
<b>Business Type:</b> <input type="checkbox"/> Corporation <input type="checkbox"/> Partnership <input type="checkbox"/> Individual <input type="checkbox"/> Consolidated Company		
<b>Status:</b> <input type="checkbox"/> Prime Contractor <input type="checkbox"/> Subcontractor	Federal Tax ID:	
Number of Employees (at peak):	Age of Firm:	Insurance Limit:

392



**PART II: PLATTE RIVER RECOVERY IMPLEMENTATION PROGRAM**

**2020-2022 CHEMICAL APPLICATION SERVICES  
LABOR & EQUIPMENT COST RATE:**

The Contractor is required to submit unit prices for all work Items below that apply to the proposal:

Item No.	Description	Unit	Unit Price
001	Mobilization and Demobilization <sup>1</sup>	LS	\$ _____
002	Chemical Application-Equipment & Labor <sup>2</sup>		
	Chemical Application-Spray Truck	HR	\$ _____
	Chemical Application-ATV	HR	\$ _____
	Chemical Application-UTV	HR	\$ _____
	Chemical Application-Argo	HR	\$ _____
	Chemical Application-Airboat	HR	\$ _____
	Chemical Application-Other	HR	\$ _____
	Chemical Application-Other	HR	\$ _____
003	Chemical Cost Markup <sup>3</sup>	YES/ NO	% _____

<sup>1</sup> Lump sum rate for mobilization and demobilization per year of service.

<sup>2</sup> Per-hour rates for equipment required to complete the work.

<sup>3</sup> Chemical will be reimbursed based on use and mark-up.



PART III: List equipment that is available to complete work.

Quantity	Item* (Description, Size, Capacity. Etc.)	Present Location

**GPS Capability?**      **Yes/No**      **Brand of Unit** \_\_\_\_\_

**Preferred Chemical for Bare Ground:**

\_\_\_\_\_  
\_\_\_\_\_  
\_\_\_\_\_

**Preferred Chemical for Noxious Weeds:**

\_\_\_\_\_  
\_\_\_\_\_  
\_\_\_\_\_



**PART IV: PLATTE RIVER RECOVERY IMPLEMENTATION PROGRAM**

**REFERENCES:**

(Names/address/telephone of three clients who can attest to your experience  
as it relates to the services you are proposing.)

FIRM NAME: \_\_\_\_\_

CONTACT PERSON: \_\_\_\_\_

ADDRESS: \_\_\_\_\_

TELEPHONE: \_\_\_\_\_

EMAIL: \_\_\_\_\_

FIRM NAME: \_\_\_\_\_

CONTACT PERSON: \_\_\_\_\_

ADDRESS: \_\_\_\_\_

TELEPHONE: \_\_\_\_\_

EMAIL: \_\_\_\_\_

FIRM NAME: \_\_\_\_\_

CONTACT PERSON: \_\_\_\_\_

ADDRESS: \_\_\_\_\_

TELEPHONE: \_\_\_\_\_

EMAIL: \_\_\_\_\_



## Appendix A

### NEBRASKA NOXIOUS WEEDS

- Saltcedar (*Tamirix* spp.)
- Purple Loosetrife (*Lythrum salicaria* L.)
- Phragmites (*Phragmites australis*)
- Leafy Spurge (*Euphorbia esula* L.)
- Canada Thistle (*Cirsium arvense* L.)
- Musk Thistle ( *Carduus nutans* L.)
- Plumless Thistle (*Carduus acanthoides*)
- Spotted (*Centaurea stoebe*) and Diffuse (*Centaurea diffusa*) Knapweed
- Japanese (*Fallopia japonica*), Giant (*Fallopia sachalinensis*) and Bohemian (*Fallopia bohemica*) Knotweed
- Sericea Lespedeza (*Lespedeza cuneata*)





## Appendix B

### NEBRASKA INVASIVE WEED WATCH LIST

Invasive Plants Watch List: Mixedgrass Prairie Ecoregion (Adams, Boyd, Buffalo, Custer, Dawson, Franklin, Frontier, Furnas, Gosper, Greeley, Hall, Harlan, Hayes, Hitchcock, Howard, Kearney, Keya Paha, Nuckolls, Phelps, Red Willow, Sherman, Valley, Webster)

#### Future Invasive Species:

Giant reed	Arundo donax L.
Oriental bittersweet	Celastrus orbiculatus
Water hyacinth	Eichhornia crassipes
Hydrilla	Hydrilla verticillata
Brittle naiad	Najas minor
Giant salvinia	Salvinia molesta

#### Priority Species:

Amur maple	Acer ginnala
Russian knapweed	Acroptilon repens
Garlic mustard	Allaria petiolata
Australian beardgrass	
(Caucasian bluestem)	Bothriochloa bladhii (Andropogon bladhii)
Cutleaf teasel	Dipsacus laciniatus
European alder-	
buckthorn	Frangula alnus
Japanese honeysuckle	Lonicera japonica, morrowii, morrowii x tatarica (also Morrow, Showy Fly)
Myriophyllum spicatum	Eurasian water-milfoil
Sulphur cinquefoil	Potentilla recta L.
Yellow-flag Iris	Iris pseudacorus



**Appendix C**  
**PRRIP Chemical Management Form**  
**(Must Accompany Invoice for Payment)**

Date \_\_\_\_\_

Complex \_\_\_\_\_ Tract \_\_\_\_\_ Start Time \_\_\_\_\_ End Time \_\_\_\_\_

Contract Company Name \_\_\_\_\_ Licensed Supervisor Name \_\_\_\_\_

Weather Conditions:

Wind Speed: \_\_\_\_\_ mph Wind Direction: \_\_\_\_\_ Temperature: \_\_\_\_\_ °F

(Circle)

Sunny Partly Cloudy Cloudy Rain Cloud Cover: \_\_\_\_\_ %

(Circle)

Bare Ground Thistle Leafy Spurge Phragmites Purple Loosetrife Tree/Brush \_\_\_\_\_

Other \_\_\_\_\_ Other \_\_\_\_\_ Other \_\_\_\_\_ Other \_\_\_\_\_ Other \_\_\_\_\_

App Date	App Hrs	Equip Used	Target Spp.	Herbicide	Rate	Adjuvant/Oil	Mix	Gallons Herbicide	Adj	

Comments: \_\_\_\_\_

\_\_\_\_\_

\_\_\_\_\_

\_\_\_\_\_

Follow-up

Comments \_\_\_\_\_

\_\_\_\_\_

\_\_\_\_\_

\_\_\_\_\_

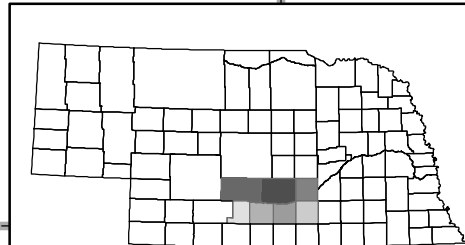
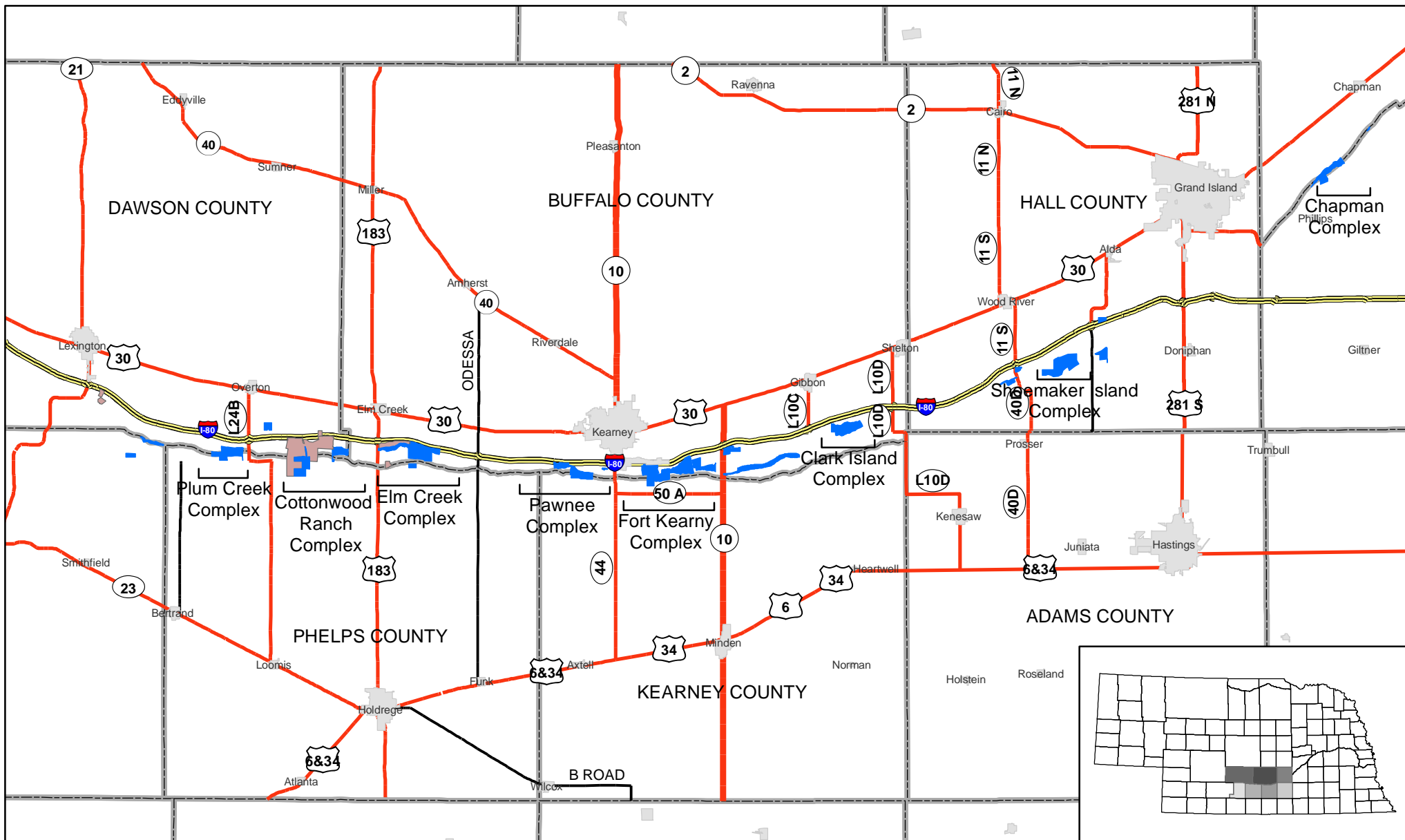
Identify Coverage Area on Map/ Provide GPS data



539  
540  
541  
542  
543

## Appendix D

Figures 1- 10



- Legend**
- County
  - Property Boundary**
  - PRRIP
  - NPPD

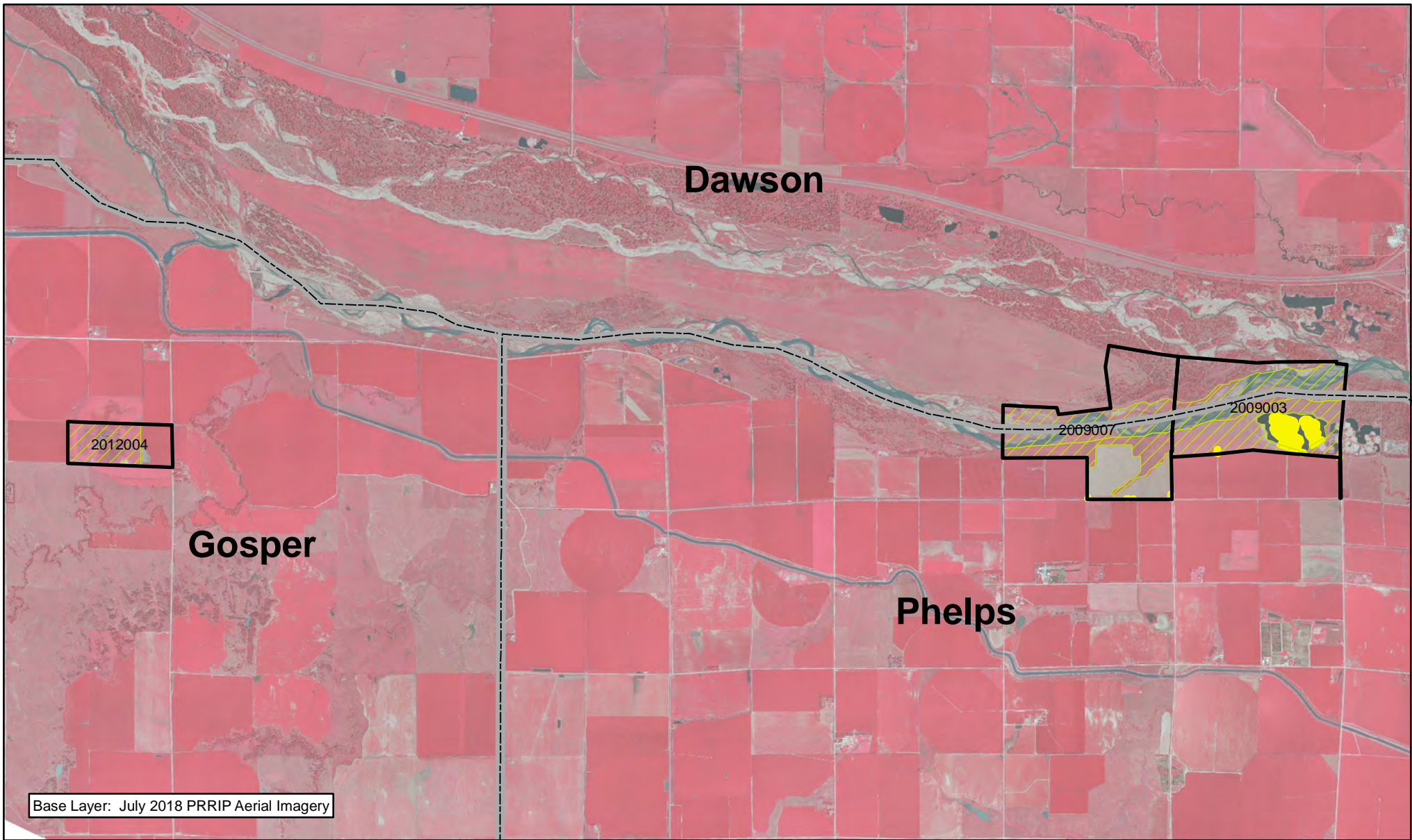


10 Miles

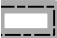


## PRRIP HABITAT COMPLEXES

Date: 11/15/2019  
By: TRT


Figure 1



**Legend**

-  County
-  Noxious\_Weed\_Units
-  Preemergent\_application



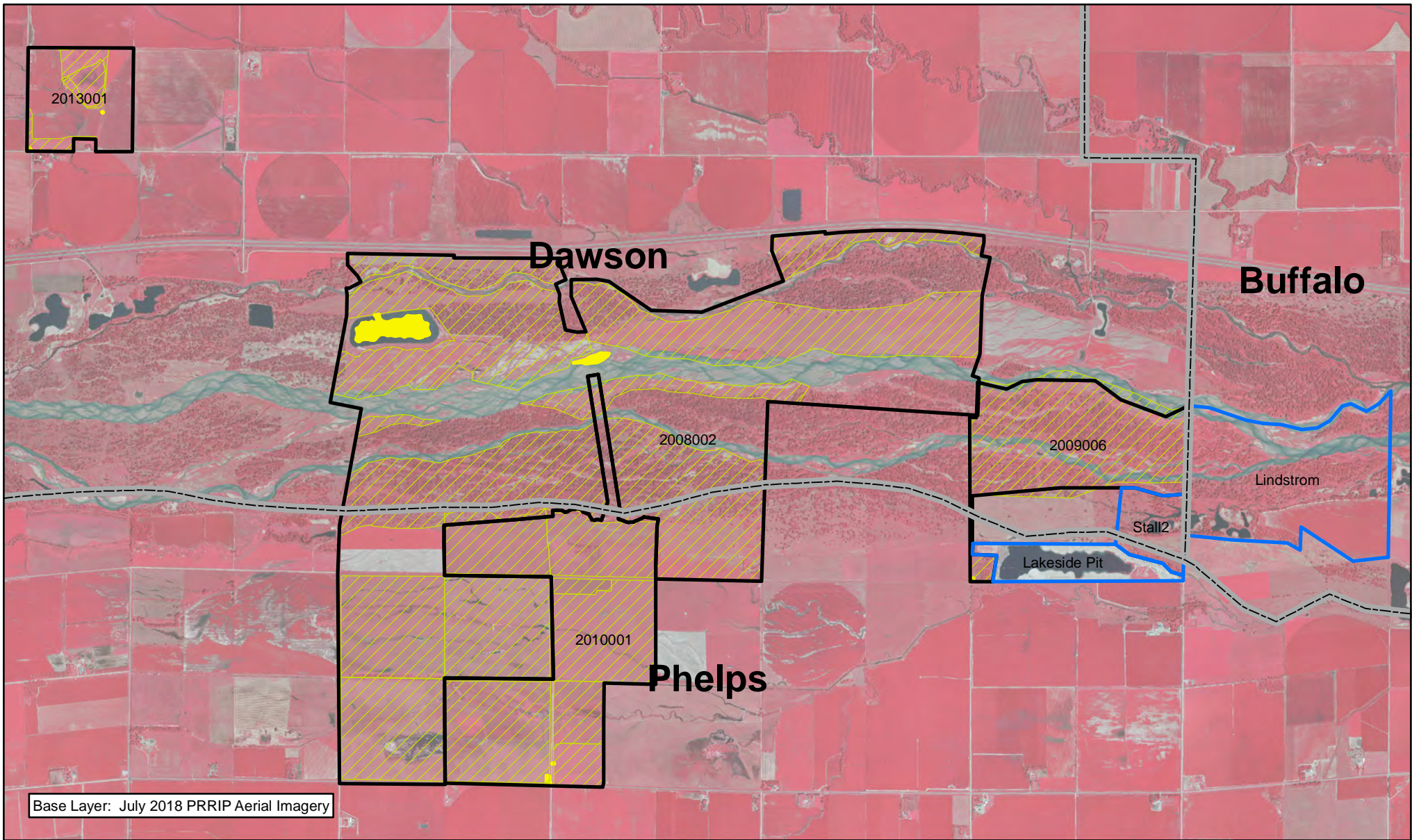
 Miles  
2

PLUM CREEK COMPLEX  
FY 2020-2022




Date: 11/19/19  
By: TRT

Figure 2






### Legend

-  County
-  Noxious\_Weed\_Units
-  Premergent\_application



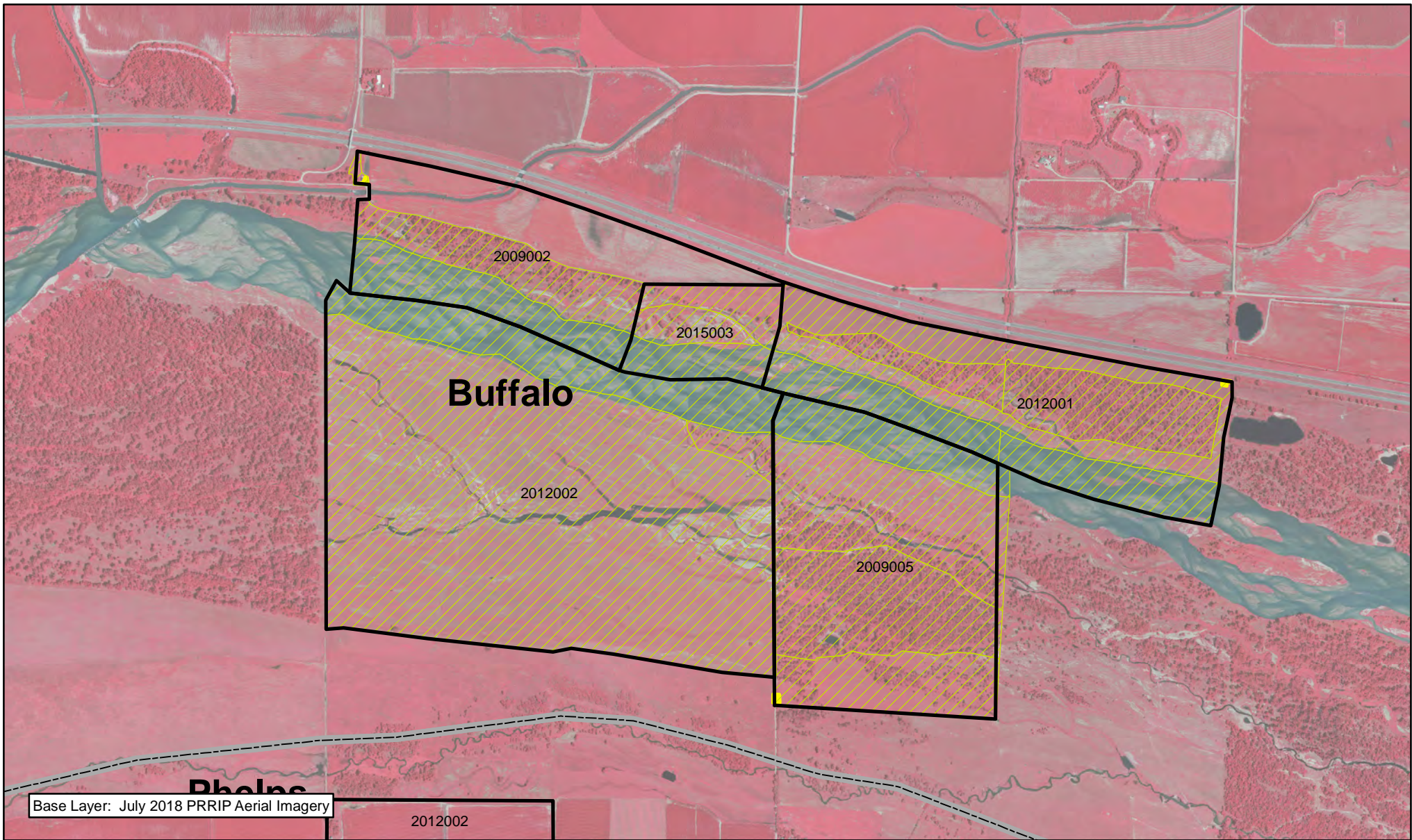
 Miles  
1.5

**COTTONWOOD RANCH  
COMPLEX  
FY 2020-2022**




Date: 11/19/19  
By: TRT

**Figure 3**






### Legend

-  County
-  Noxious\_Weed\_Units
-  Preemergent\_application



 Miles

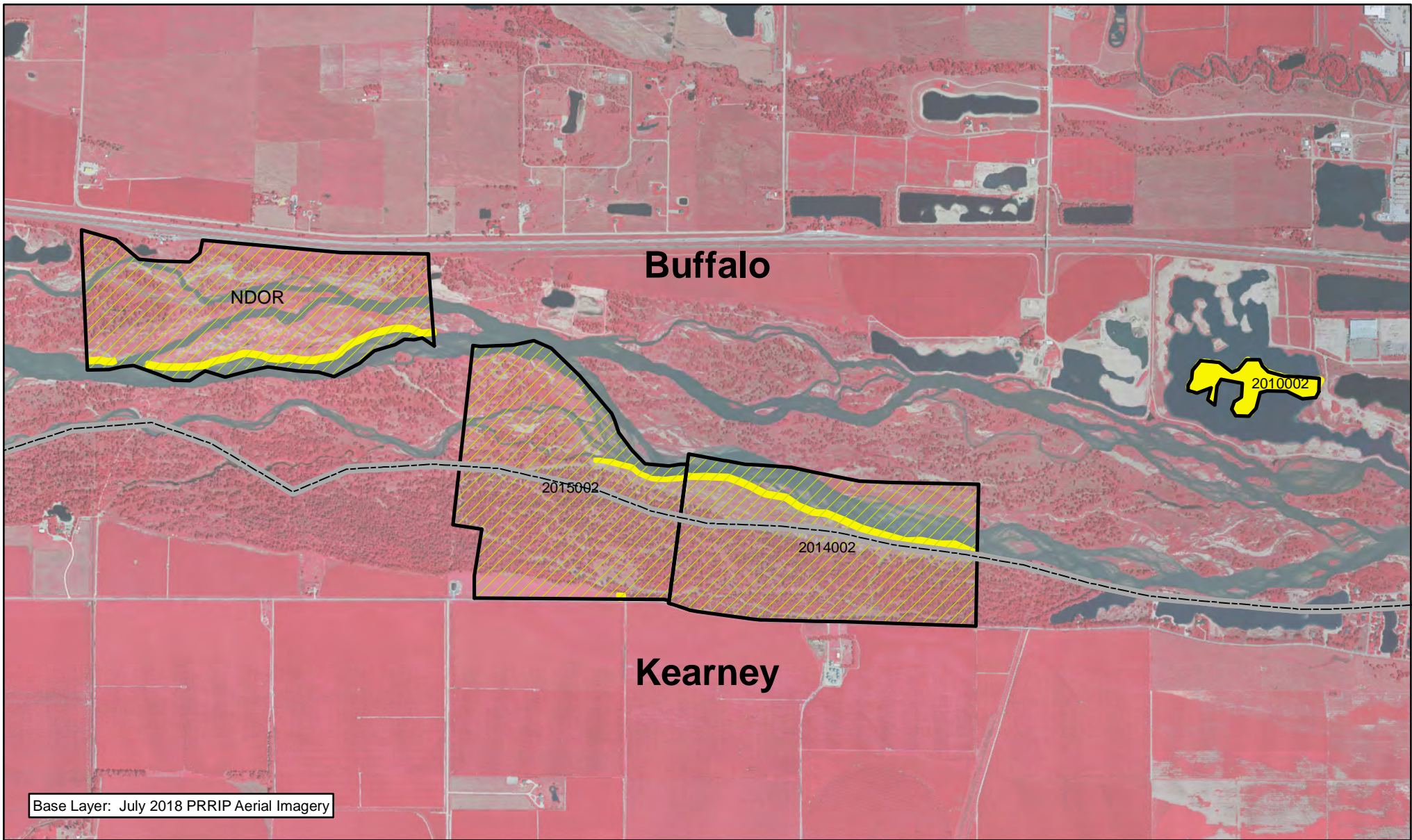
1

ELM CREEK  
COMPLEX  
FY 2020-2022

Date: 11/19/19  
By: TRT

Figure 4





- Legend**
- County
  - Noxious\_Weed\_Units
  - Preemergent\_application



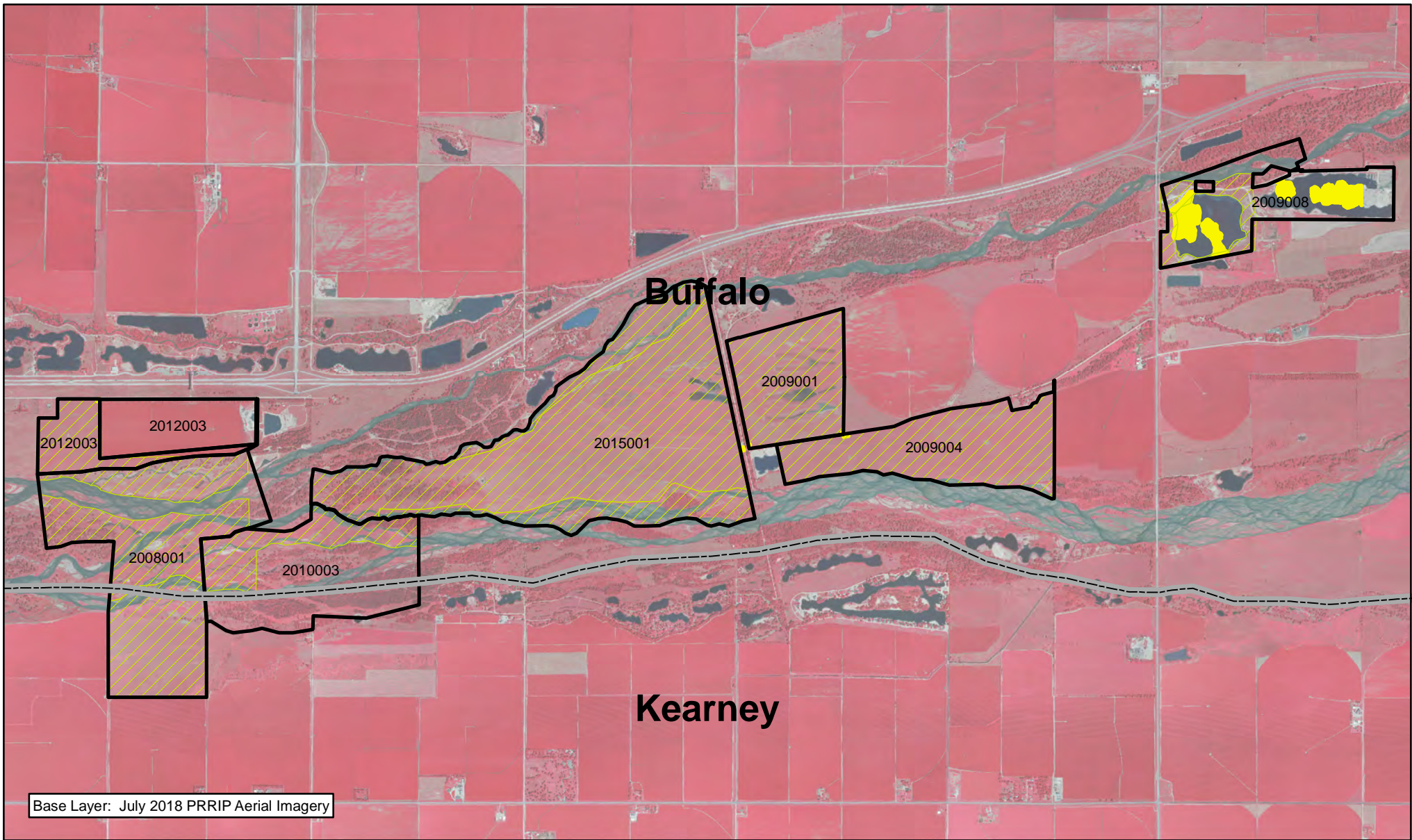
1 Miles

PAWNEE  
COMPLEX  
FY 2020-2022

Date: 11/19/19  
By: TRT

Figure 5





- Legend**
- County
  - Noxious\_Weed\_Units
  - Preemergent\_application



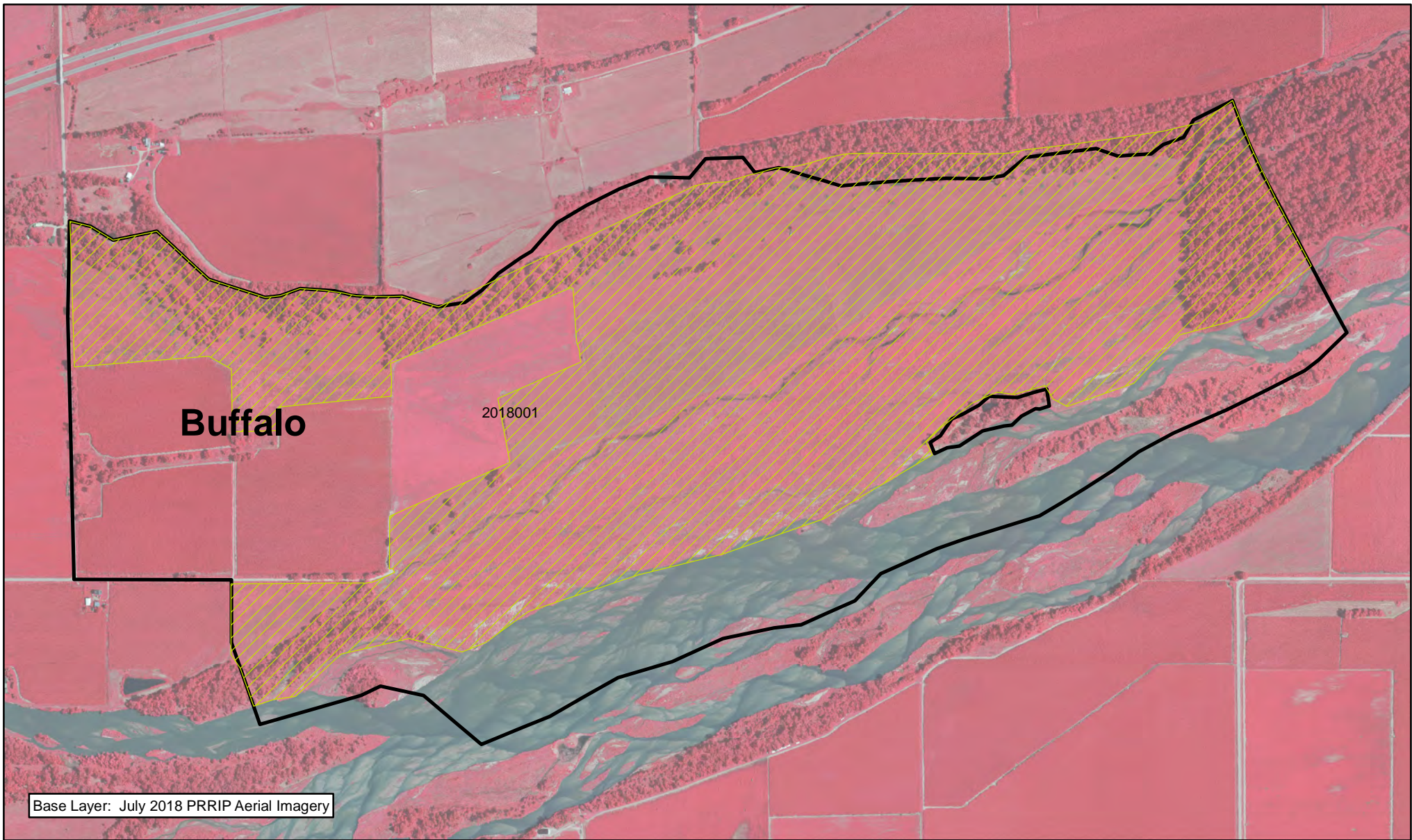
1.5 Miles

**FORT KEARNY  
COMPLEX  
FY 2020-2022**

Date: 11/19/19  
By: TRT

**Figure 6**









Base Layer: July 2018 PRRIP Aerial Imagery



**Legend**

-  County
-  Preemergent\_application
-  Noxious\_Weed\_Units



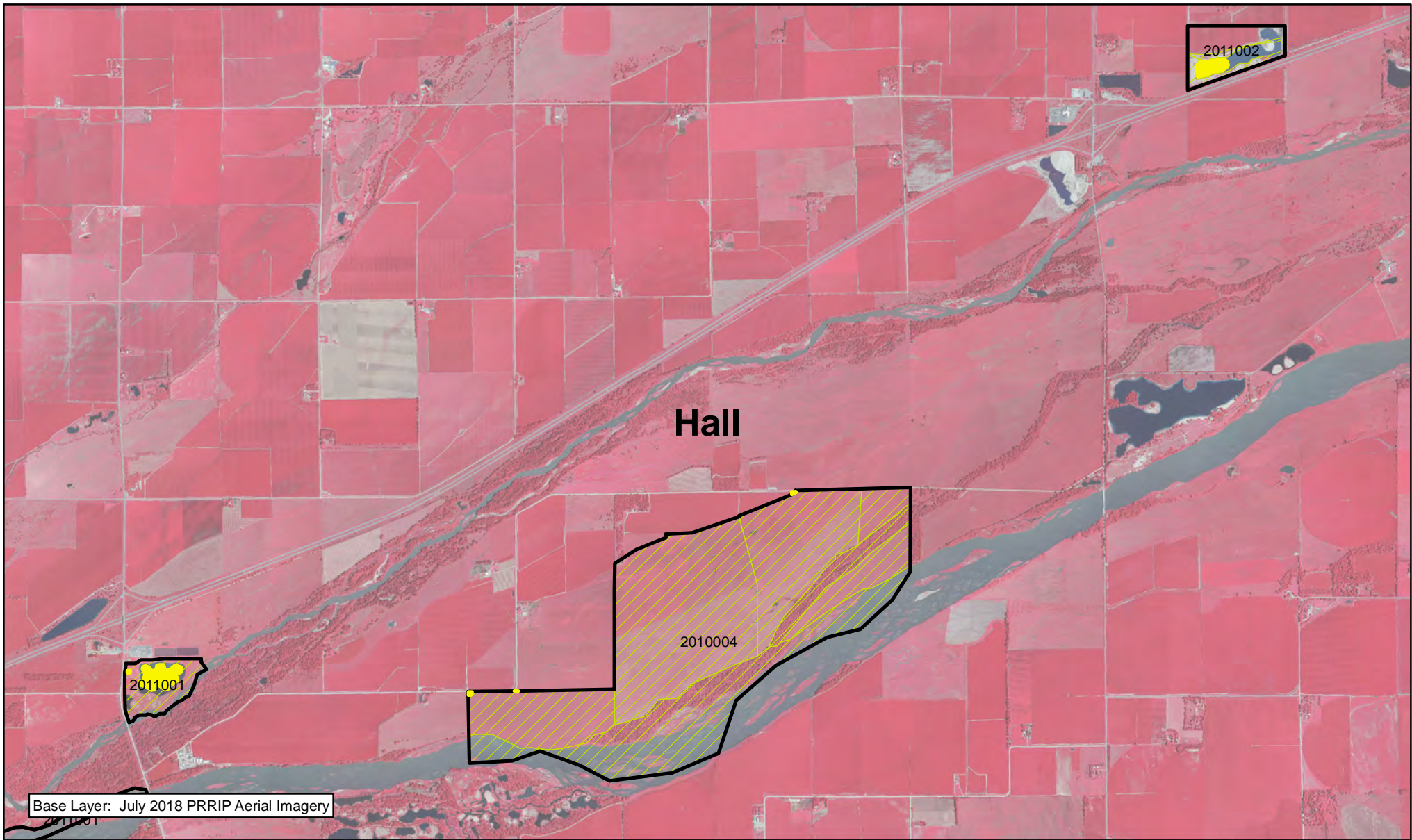
 0.5 Miles

CLARK ISLAND  
COMPLEX  
FY 2020-2022

Date: 11/19/19  
By: TRT

Figure 7





- Legend**
- County
  - Noxious\_Weed\_Units
  - Preemergent\_application



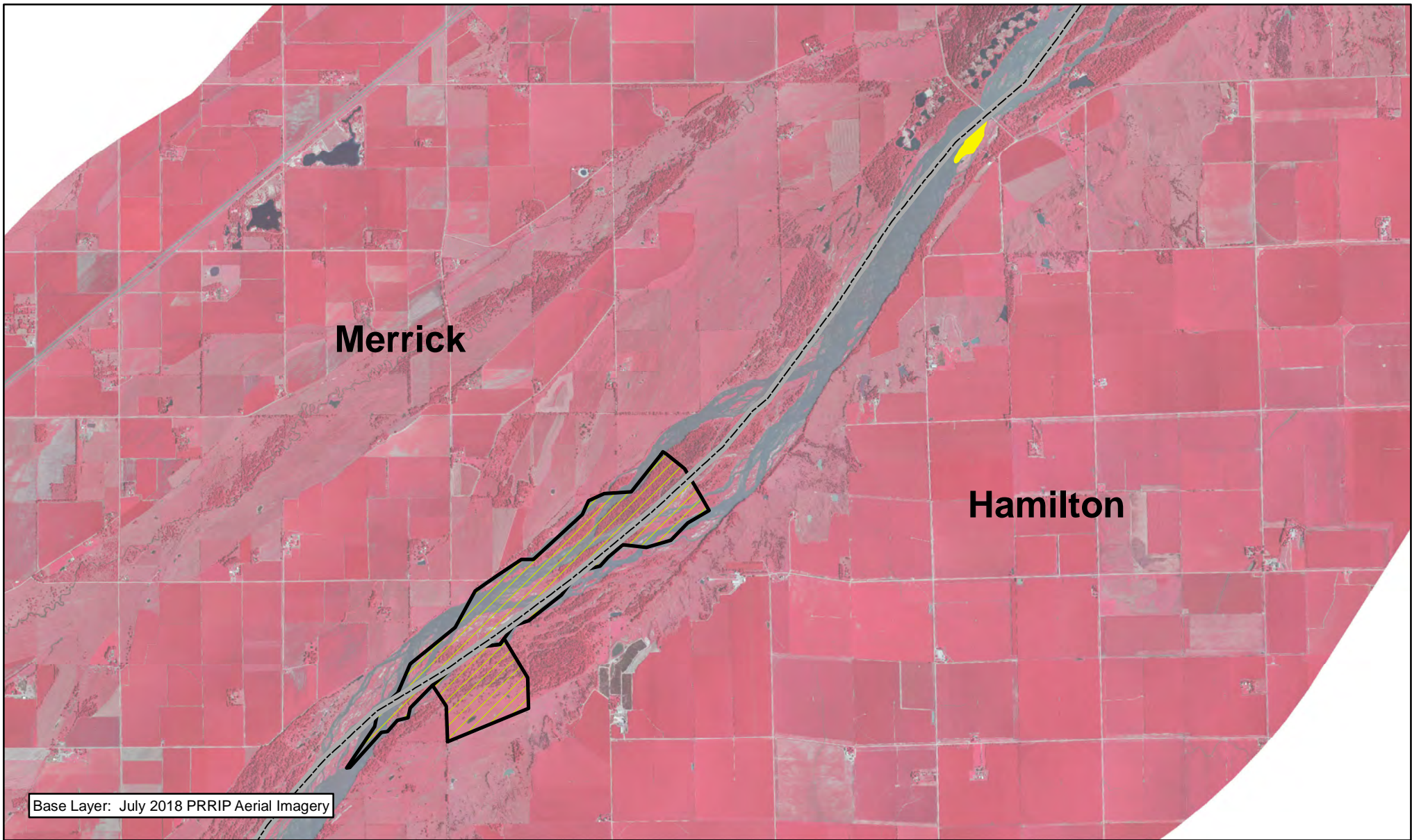
1 Miles

SHOEMAKER ISLAND  
COMPLEX  
FY 2020-2022

Date: 11/19/19  
By: TRT

Figure 8









Base Layer: July 2018 PRRIP Aerial Imagery



**Legend**

-  County
-  Noxious\_Weed\_Units
-  Preemergent\_application

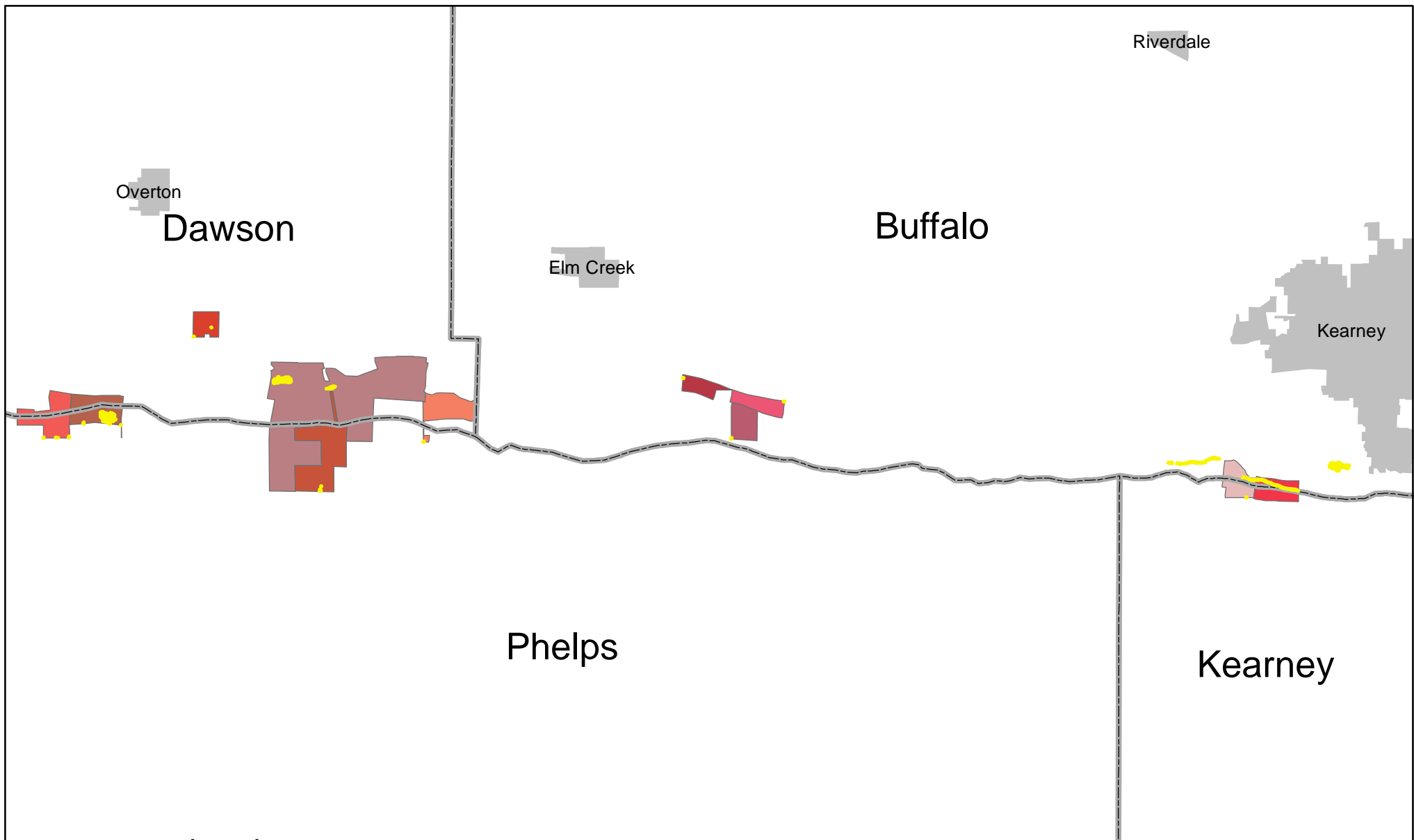


 Miles  
2

CHAPMAN  
COMPLEX  
FY 2020-2022

Date: 11/19/19  
By: TRT

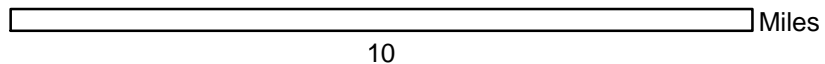
Figure 9



#### Legend

##### PRRIPTractNum

2008002	2010001
2009002	2010002
2009003	2012001
2009005	2013001
2009006	2014002
2009007	2015002

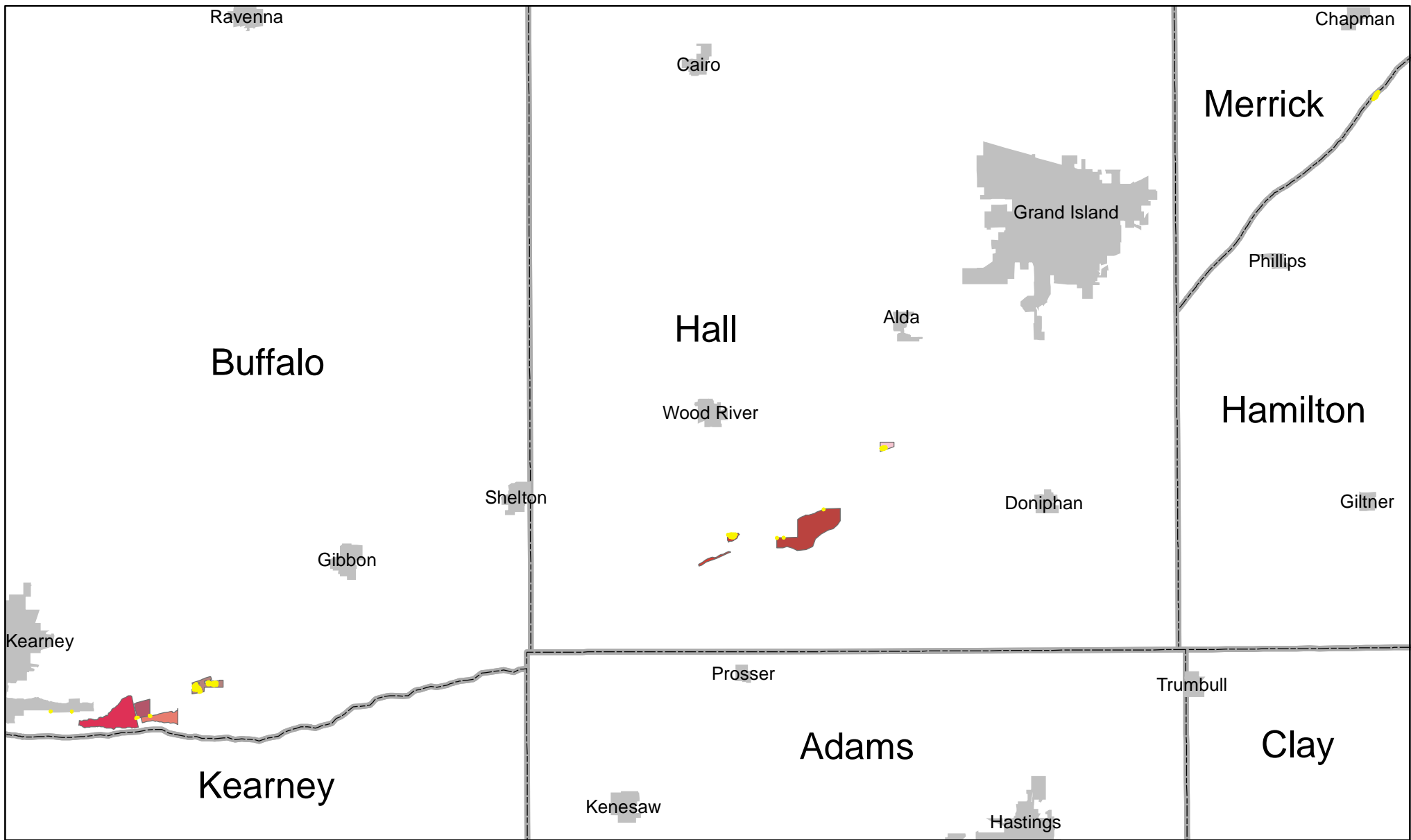


OCSW BARE GROUND  
WEST

Date: 11/19/2019

By: TRT

Figure 10



PLATTE RIVER  
RECOVERY IMPLEMENTATION PROGRAM

### Legend

#### PRRIPTractNum

- 2009001
- 2009004
- 2009008

- 2010004
- 2011001
- 2011002
- 2015001



10 Miles

10

### OCSW BARE GROUND EAST

Date: 11/19/2019

By: TRT

Figure 11